

# real PEOPLE

---

# real CONSEQUENCES



A 45% cut in Iowa funds for victim services means more than 300 women, men and children will have no where to turn when the violence at home gets so bad they must leave.

**Tell your legislator to protect victims!**  
Maintain Iowa's Victim Services.

For more information about how to help, or where to mail this postcard, call the Domestic Violence Intervention Program at 319-356-9863 ext. 2



# real PEOPLE

---

# real CONSEQUENCES



A 45% cut in Iowa funds for victim services means she will have no where to turn when the abuser she left continues to stalk and assault her for the next two years — that's the average folks.

**Tell your legislator to protect victims!**  
Maintain Iowa's Victim Services.

For more information about how to help, or where to mail this postcard, call the Domestic Violence Intervention Program at 319-356-9863 ext. 2



# real PEOPLE

---

# real CONSEQUENCES



A 45% cut in Iowa funds for victim services means she will have no where to turn when the abuser has taken all of her money, and she has to start over ... from nothing.

**Tell your legislator to protect victims!**  
Maintain Iowa's Victim Services.

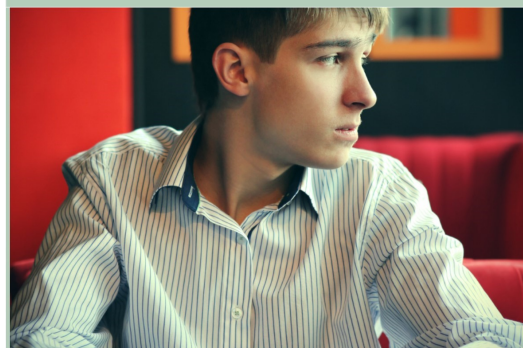
For more information about how to help, or where to mail this postcard, call the Domestic Violence Intervention Program at 319-356-9863 ext. 2



# real PEOPLE

---

# real CONSEQUENCES



A 45% cut in Iowa funds for victim services means he will have no where to turn when he's terrified his mother will be beaten again.

**Tell your legislator to protect victims!**  
Maintain Iowa's Victim Services.

For more information about how to help, or where to mail this postcard, call the Domestic Violence Intervention Program at 319-356-9863 ext. 2



Place  
Stamp  
Here

---

---

---

---

Place  
Stamp  
Here

---

---

---

---

Place  
Stamp  
Here

---

---

---

---

Place  
Stamp  
Here

---

---

---

---